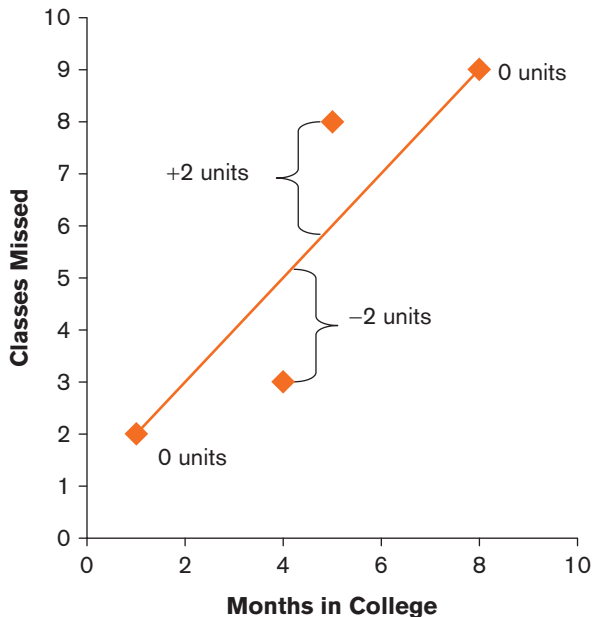


FIGURE 15.6

A Table and Scatter Plot Showing the Number of Months That Four Students ($n = 4$) Attended College and the Number of Classes They Missed

Months in College	Classes Missed
X	Y
1	2
4	3
8	9
5	8



The correlation coefficient (r) measures the distance, stated in units for this example, that data points fall from the regression line. Both the table and the scatter plot show the same data.